

FREEHOLD



House - End Terrace

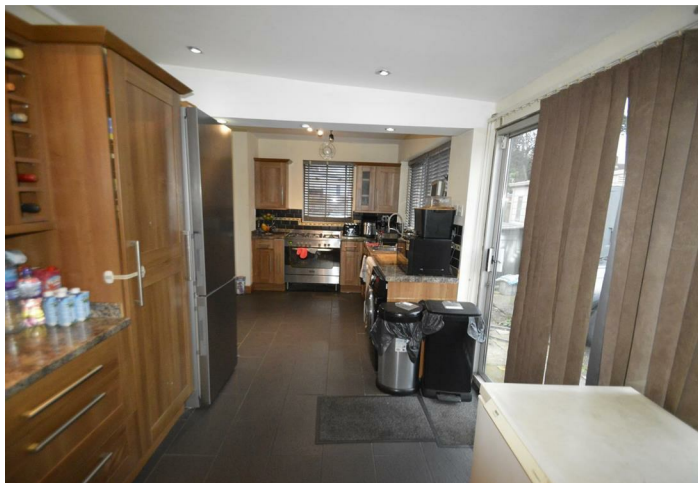
SHANNON WAY, AVELEY, SOUTH OCKENDON, RM15 4QU

Guide Price

£400,000

FEATURES

- THREE BEDROOMS
- THREE RECEPTION ROOMS
- SOLAR PANELS
- LOTS OF PARKING TO REAR
- UPSTAIRS BATHROOM
- EXTENDED KITCHEN DINER
- DOWNSTAIRS CLOAKROOM/WC
- LARGE BACK GARDEN



STEPS

Estate Agents

3 Bedroom House - End Terrace located in South Ockendon

HALLWAY

LOUNGE

14'9 x 13'6

Widow to front.

DINING ROOM

15 x 7'9

Door to kitchen.

CLOAKROOM

WC wash basin.

EXTENDED KITCHEN DINER

22 x 8'9

Range of base / wall units, patio doors to garden.

THIRD RECEPTION ROOM

22 x 11

Window to front.

LANDING

Window to side.

BEDROOM ONE

13'4 x 10

Window to rear.

BEDROOM TWO

9'6 x 8'2

Window to front.

BEDROOM THREE

10'7 x 7'6

Window to front.

BATHROOM

Three piece suite.

EXTERIOR

Paved front garden, large paved back garden with double gates leading to parking area to rear.

We routinely refer potential purchasers to Move with Us Ltd. It is your decision whether you choose to deal with Move with Us Ltd. In making that decision, you should know that we receive an annual payment benefits from Move with Us Ltd, equating to approximately £314.48 per referral.



DAGENHAM SALES | STEPS ESTATE AGENTS, 298 HEATHWAY, DAGENHAM, ESSEX, RM10 8LU

Call us on

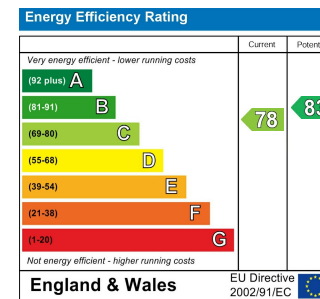
020 8593 5933

dagenham@steps.me.uk

www.steps.me.uk

Council Tax Band

C



Agents Note: Whilst every care has been taken to prepare these particulars, they are for guidance purposes only. All measurements are approximate and are for general guidance purposes only and whilst every care has been taken to ensure their accuracy, they should not be relied upon and potential buyers are advised to recheck the measurements.

